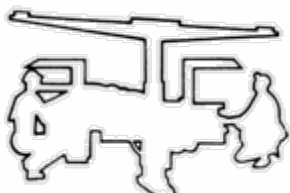




with Fletcher....



DUST SUPPRESSION SYSTEM

***Importance
of
Dust Suppression
System***

DRILLING RATE



Drilling cannot occur any faster than the rate at which cuttings are removed from the hole.

HEALTH (MSHA)



The Dust Suppression System must be designed, manufactured and maintained to limit the machine operator's exposure to harmful dust.

Approval Requirements for Dust Suppression System

APPROVAL REQUIREMENTS - CERTIFICATION PLATE...

United States Department of Labor
MSHA
Mine Safety and Health Administration

J. H. FLETCHER & CO.
**PERFORMANCE-TESTED
DUST COLLECTING SYSTEM**

File No. P/T 2013 Approval 258-211
Type or Model RR11 Serial 200131

Approved for rock drilling in coalmines only when each dust-collecting system is assembled with drill steel (minimum I.D. 1 1/2 inches), MSHA-
P/T-1059 drill head, MSHA-P/T-1059 cyclone tank, MSHA-
P/T-1059 filter tank, MSHA-25210 filter, MSHA-
blower (minimum 2000 rpm), MSHA-25211 relief valve
(minimum 12 inches Hg), MSHA-42-212 muffler, and not more
than 621 inches of MSHA-25213 collector hose, and not more
than 130 inches of MSHA-25349 exhaust hose. 19089



Provides:

Approval Number

Minimum Blower Vacuum
Relief Valve Setting

A Dust Suppression System Approval Plate must be installed on the machine.



NOTICE

J. H. FLETCHER & CO.: DUST COLLECTION SYSTEM

1. SHUT THE MACHINE OFF.
2. OPEN THE DUST BOX DOOR.

NOTE: IF MACHINE IS EQUIPPED WITH DUST BAG, REVIEW PROCEDURES IN OPERATOR'S MANUAL FOR ADDITIONAL INFORMATION.

3. LOOK AT THE DUST FILTER (DO NOT ATTEMPT TO CLEAN THE FILTER, AS THIS FILTER WILL CONTAIN A HIGH CONCENTRATION OF RESPIRABLE DUST.
4. IF THE DUST FILTER IS EXTREMELY CLOGGED, HAVE MAINTENANCE REPLACE THE FILTER WITH A NEW ONE. IF YOU ARE CHANGING THE FILTER, WEAR APPROPRIATE PPE PROTECTION.
5. PULL OUT THE HEAVIER DUST "FINES" WHICH HAVE GATHERED AT THE BOTTOM OF THE BOX. REMOVE THE FINES BY GRABBING THE TRAY AND PULLING OUT THE DUST "FINES".
6. WHEN YOU ARE REMOVING THE DUST, MAKE SURE YOU STAND ON THE SIDE OR END THAT IS PUSHING FRESH AIR AGAINST YOUR BACK SO THAT THE DUST "FINES" THAT COME OUT ARE BLOWN AWAY FROM YOU.
7. REPLACE THE TRAY IN THE TANK.

NOTE: TRAY NOT SUPPLIED IF DUST BAGS ARE USED.

8. USE A TOWEL/RAG TO REMOVE DUST FROM AROUND THE GASKET ON THE DOOR.
9. CHECK COMPLETE SYSTEM FOR LEAKS OR RESTRICTIONS.
10. SECURE THE DOOR.

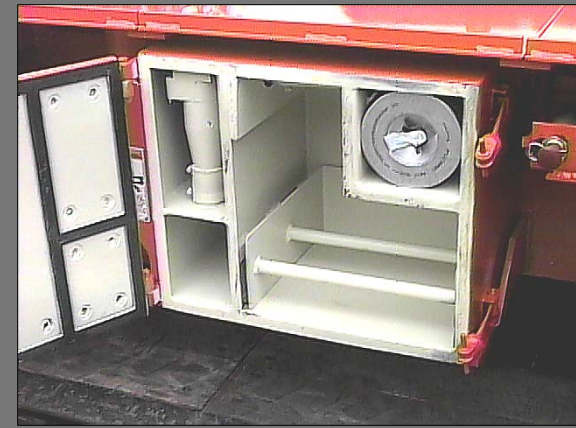
SEE SERVICE AND PARTS MANUALS FOR INFORMATION ON THIS SYSTEM.

USE ONLY J. H. FLETCHER & CO. REPLACEMENT PARTS
TO MAINTAIN MSHA DUST SYSTEM APPROVAL (30CFR PART 33).

J. H. FLETCHER & CO.

PART NO. 359126

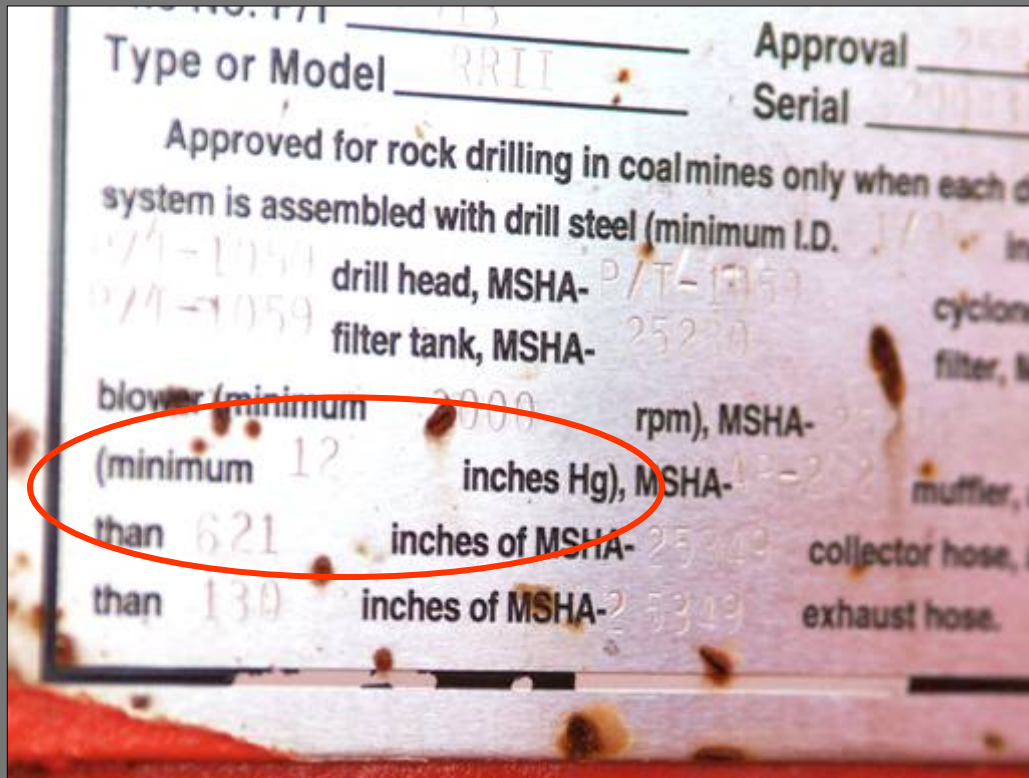
APPROVAL REQUIREMENTS - COMPONENTS...



All components must meet Dust Suppression System Approval specifications.

APPROVAL REQUIREMENTS

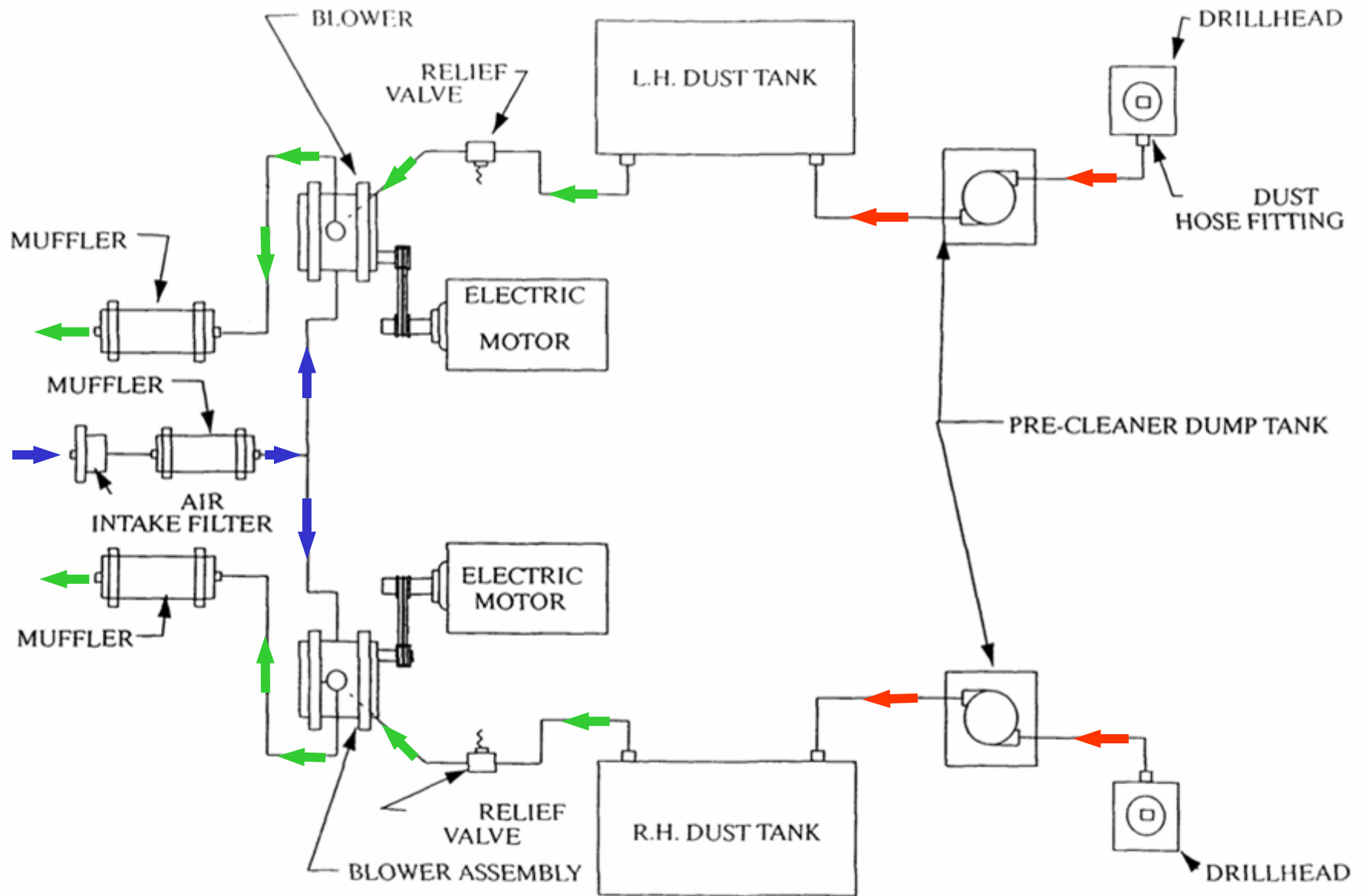
MINIMUM BLOWER VACUUM RELIEF VALVE SETTING...



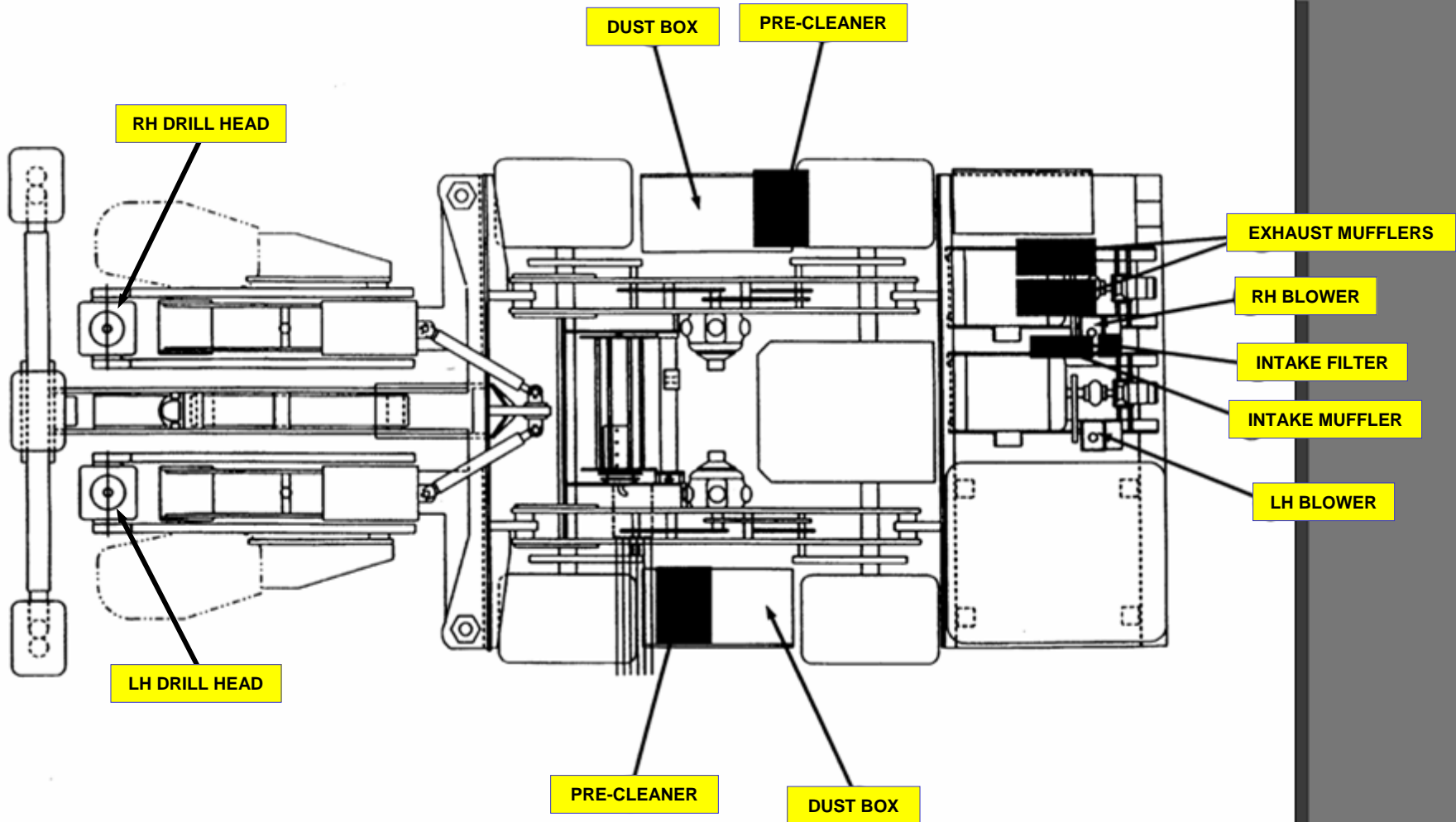
The Blower Vacuum Relief Valve Setting must meet Approval Requirement.

System Components

SYSTEM COMPONENTS - TYPICAL SYSTEM – Circuit and Airflow



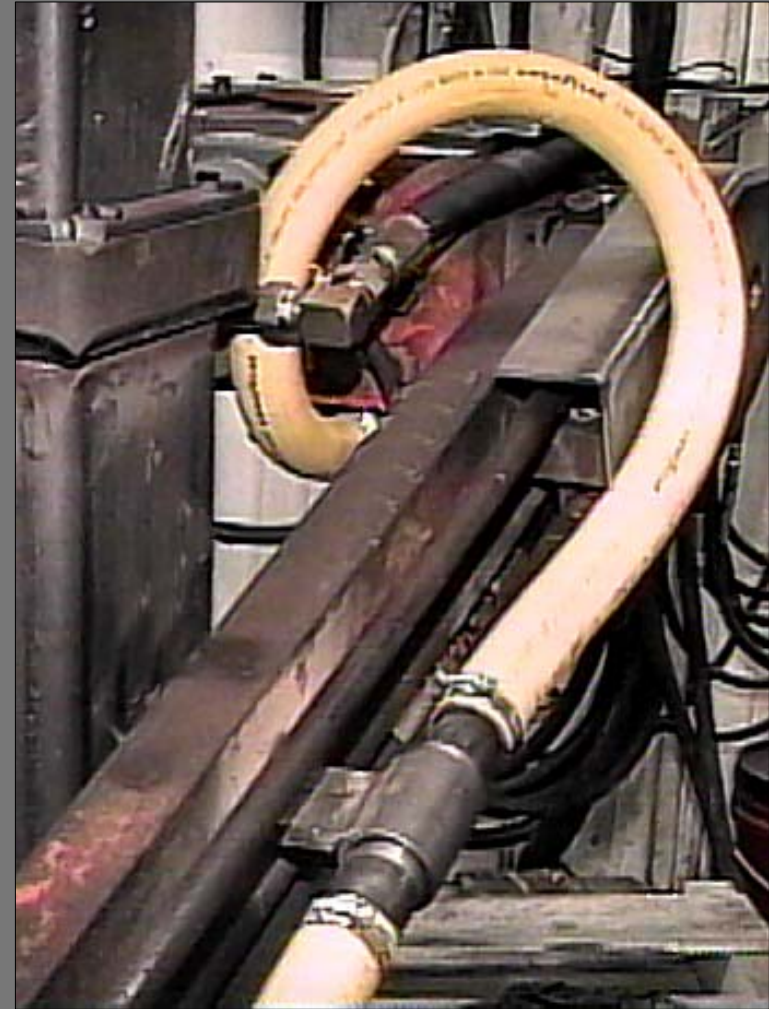
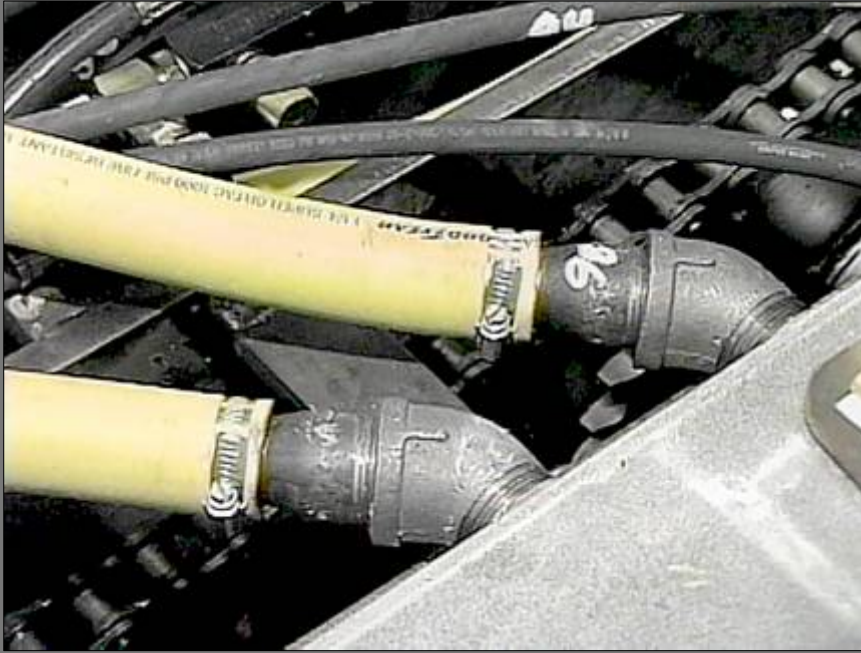
SYSTEM COMPONENTS - TYPICAL SYSTEM - RRII Layout Drawing



SYSTEM COMPONENTS - DRILLHEAD AND CHUCK



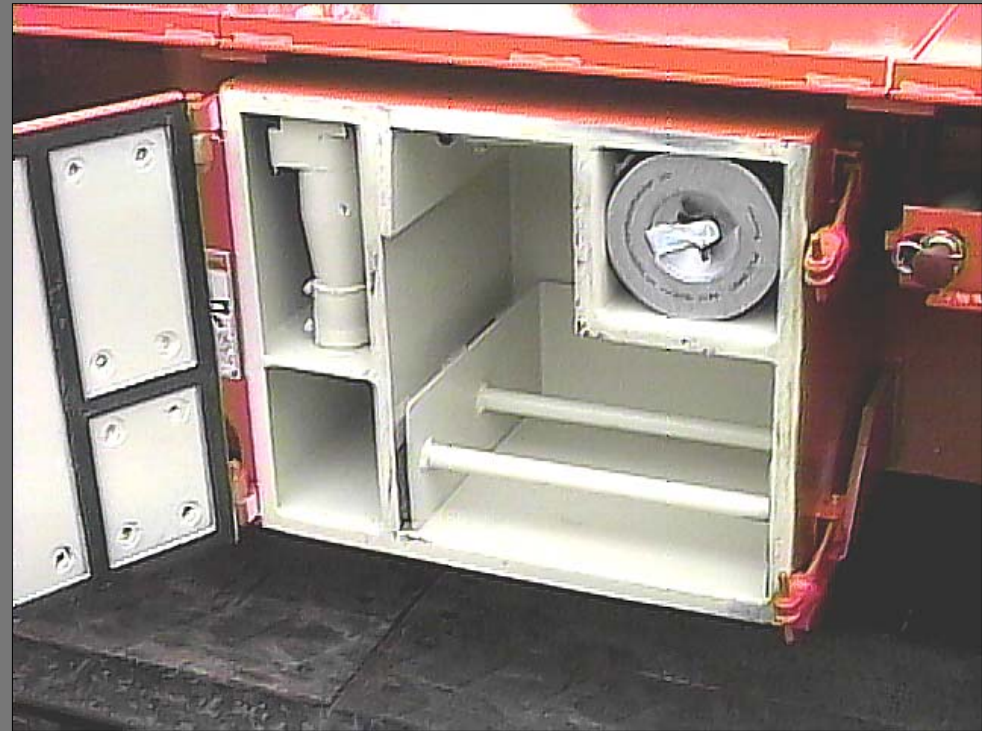
SYSTEM COMPONENTS - DUST HOSE, FITTINGS AND CLAMPS



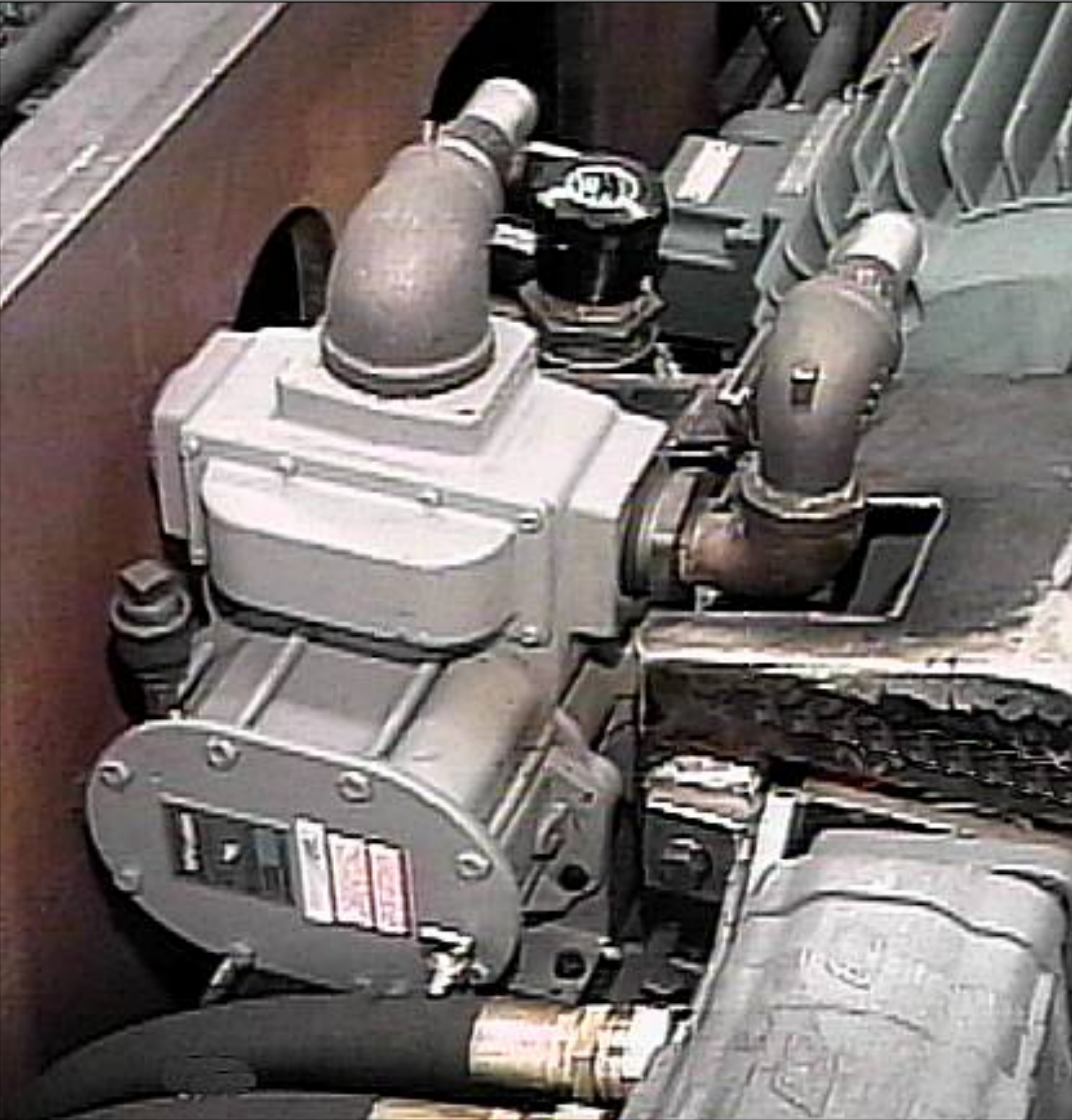
SYSTEM COMPONENTS - PRE-COLLECTORS



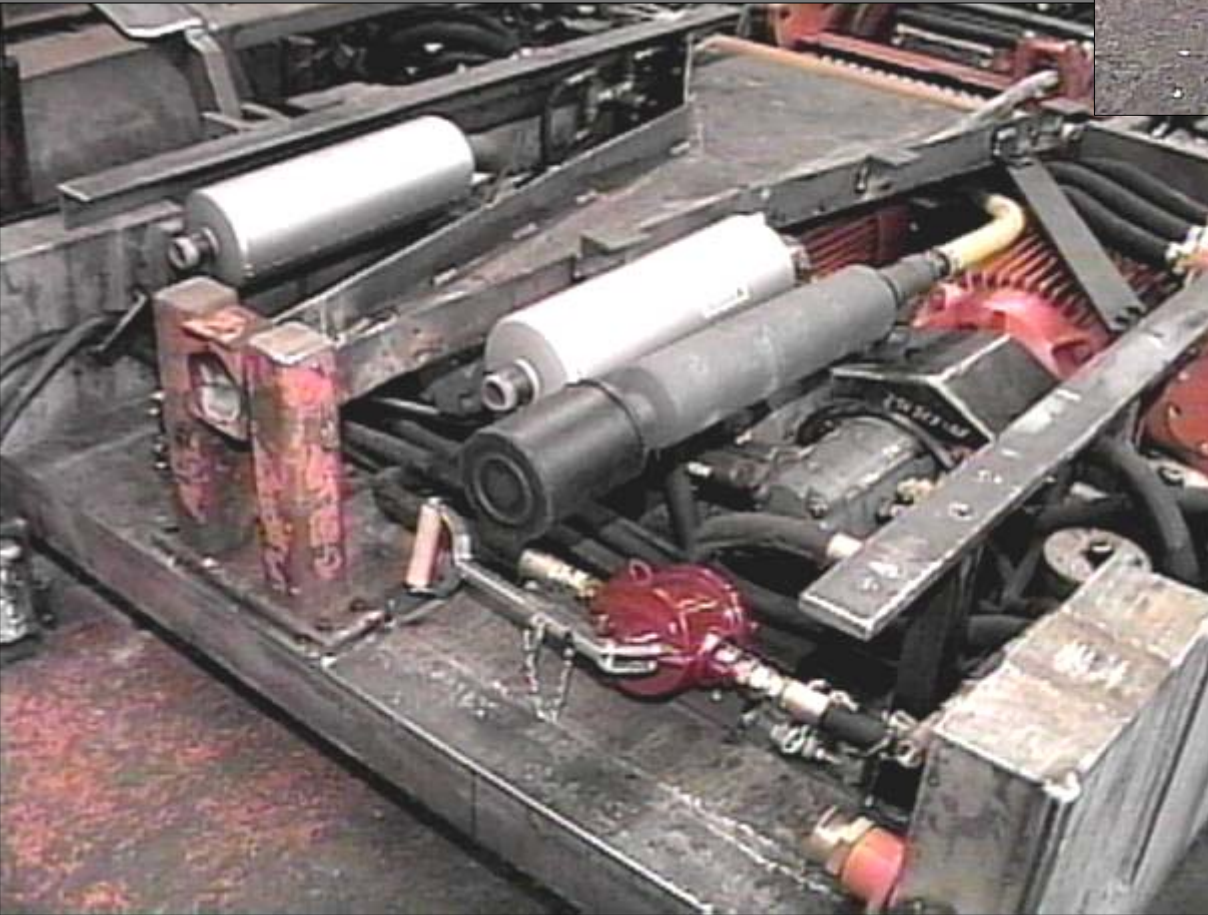
SYSTEM COMPONENTS - DUST BOXES AND FILTER ELEMENTS



SYSTEM COMPONENTS - BLOWERS AND RELIEF VALVES

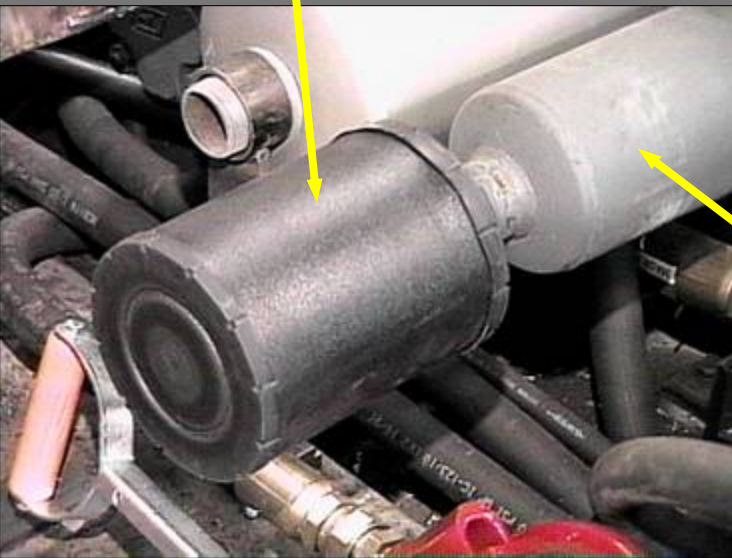
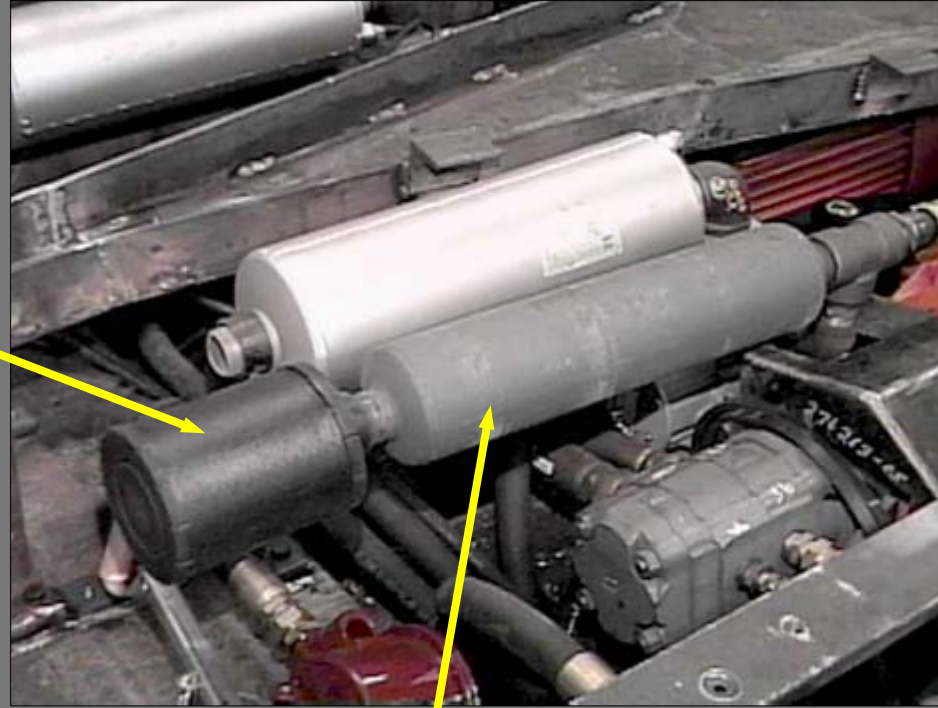


SYSTEM COMPONENTS - MUFFLERS



SYSTEM COMPONENTS - COOLING AIR INTAKE FILTER AND MUFFLER

COOLING AIR INTAKE FILTER



COOLING AIR
INTAKE MUFFLER



Inspection
and
Maintenance

INSPECTION AND MAINTENANCE - DRILLHEAD AND CHUCK

- Check Chuck for Cracks and Excessive Wear
- Check for Drill Head Seal Leakage

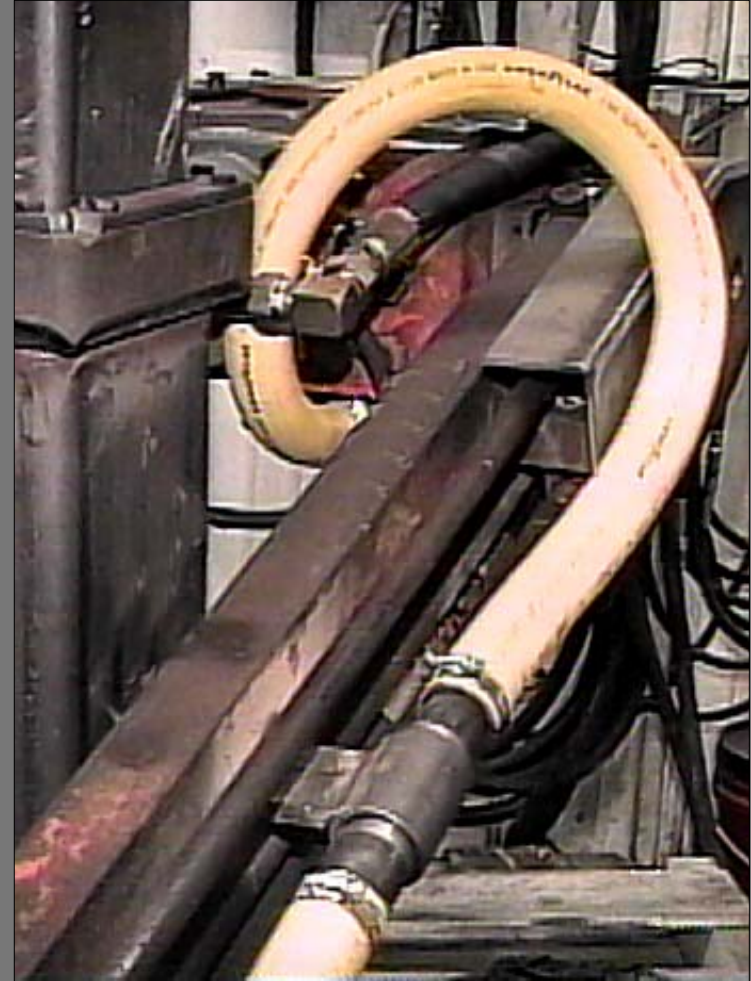


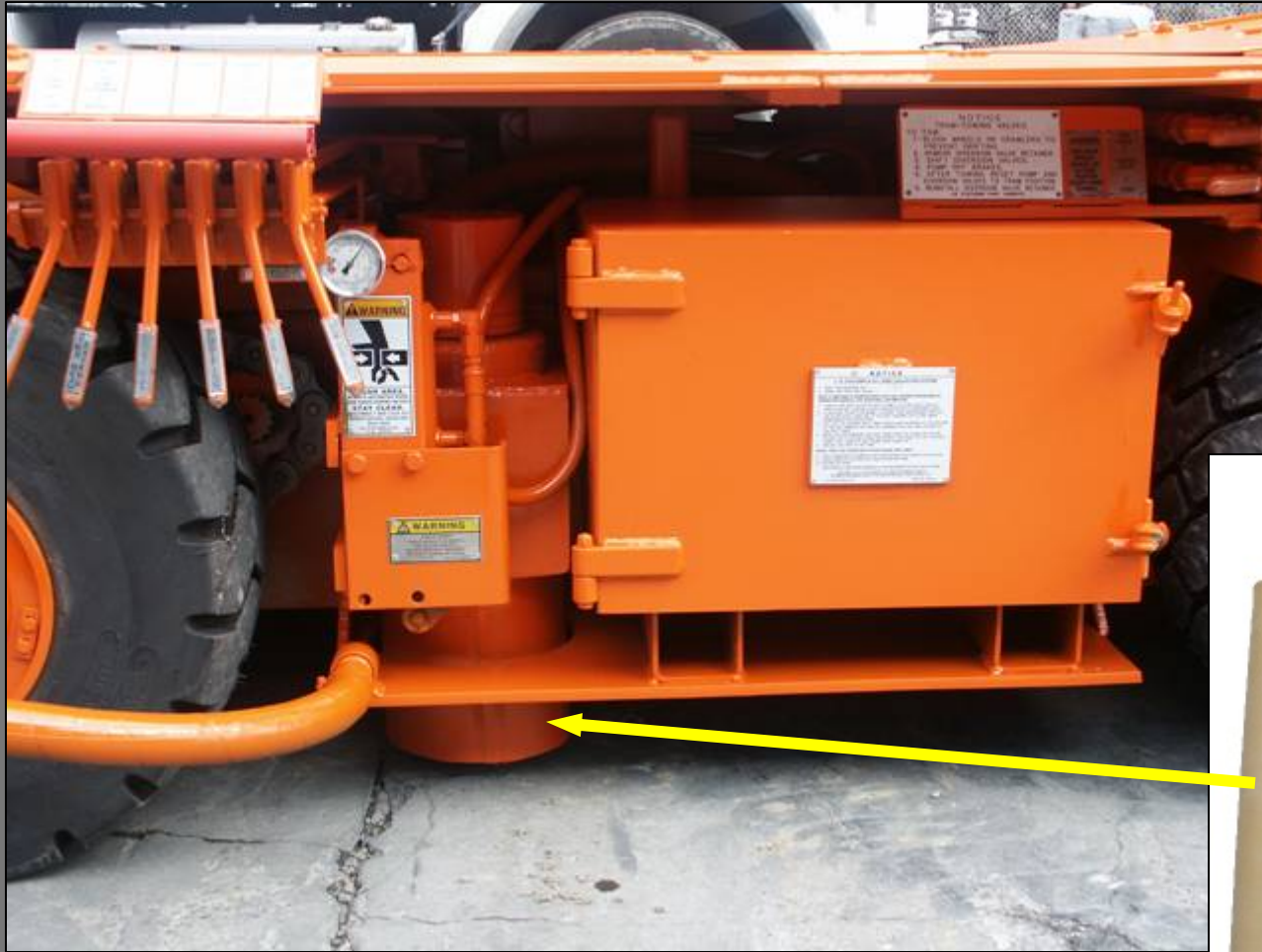
INSPECTION AND MAINTENANCE - DUST HOSE, FITTINGS AND CLAMPS

Check for and Fix Any Leaks

Check for Hose Wear and Replace if Required

Hose Clamps – Installed and Tight





Skirt on Pre-Cleaner

INSPECTION AND MAINTENANCE

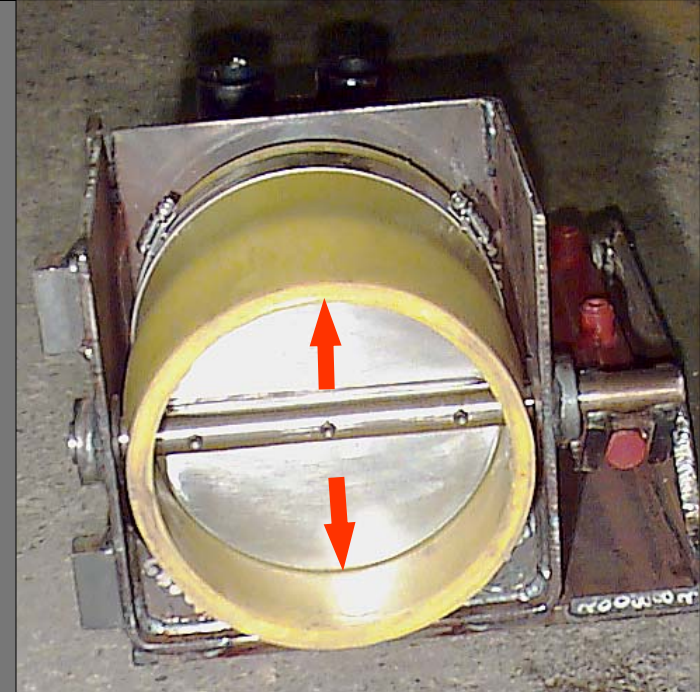
PRE-COLLECTORS

WARNING

Operation of the Pre-Collector is controlled by other machine functions. Operation may occur at any time while machine is running.

Before performing any inspection, maintenance or repair on the Pre-Collector unit always remove the power to the machine at the power center, lock and tag out.

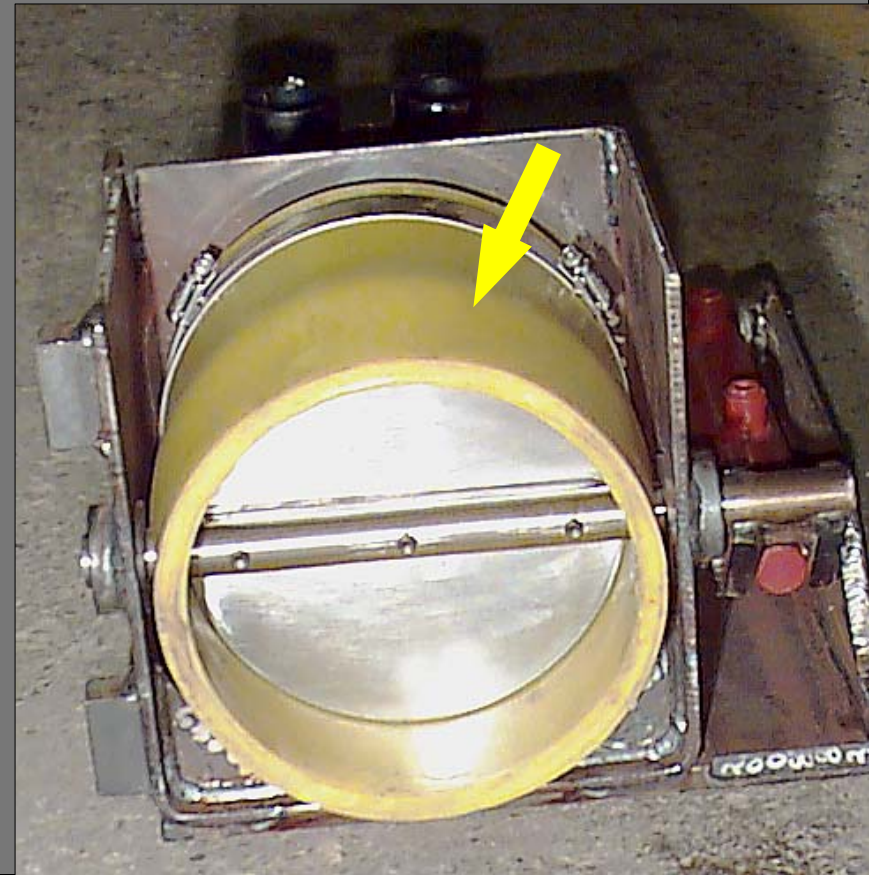
Serious injury can occur from failure to remove power, lock and tag out prior to performing inspection, maintenance or repair on the Pre-Collector Unit.



INSPECTION AND MAINTENANCE - PRE-COLLECTORS



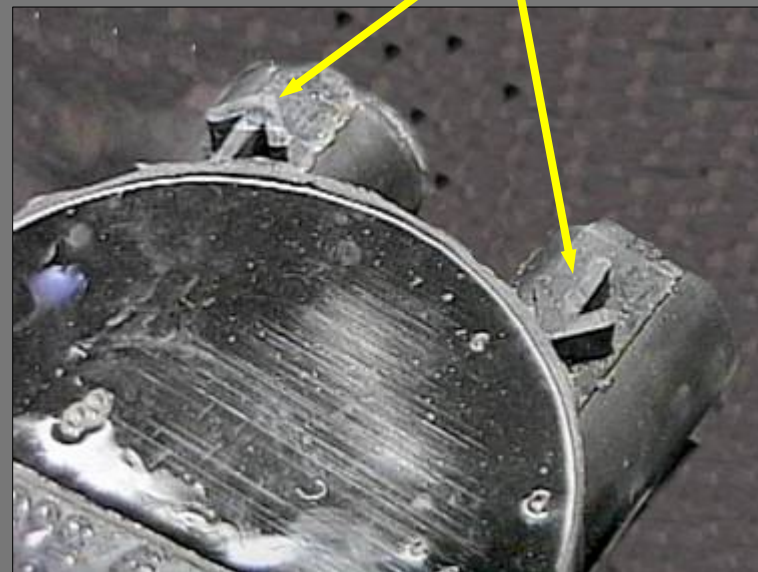
Butterfly Valve Sleeve





Cyclone Cap

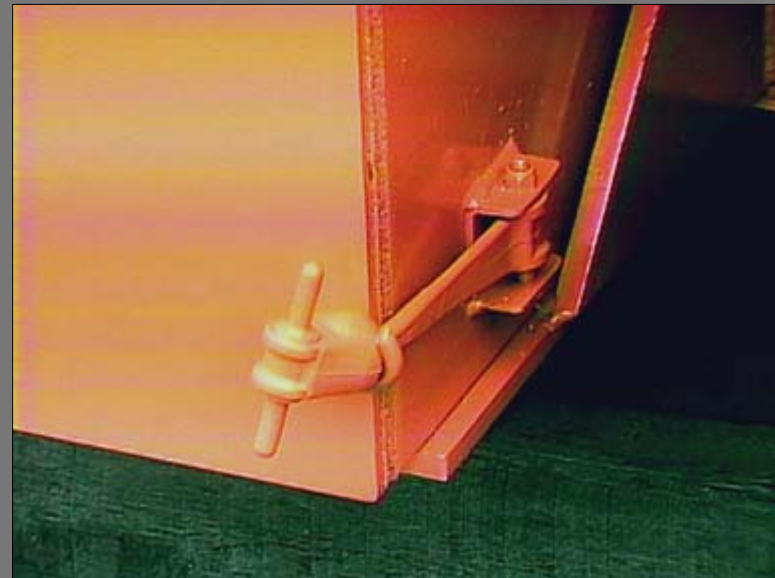
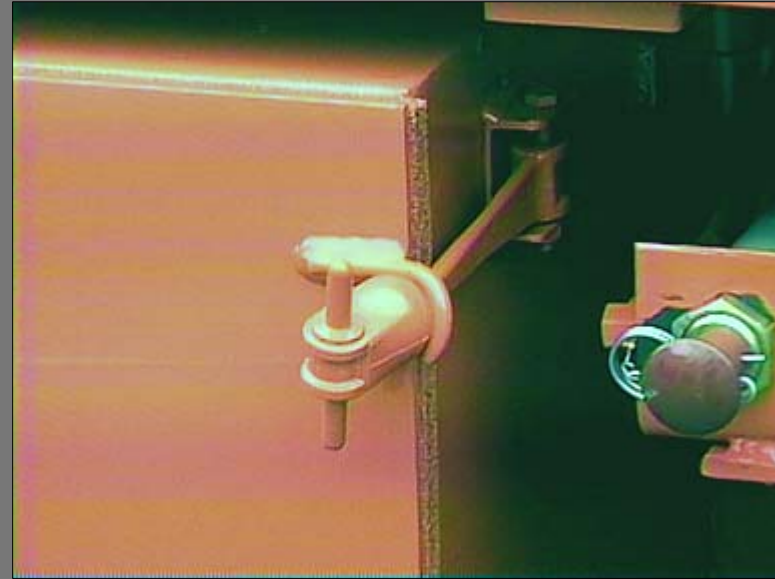
**MAKE SURE HOSES ARE
CONNECTED CORRECTLY
AIRFLOW DIRECTION ARROWS**



INSPECTION AND MAINTENANCE

DUST BOXES AND FILTER ELEMENTS...

Door Latches



Doors and Door Gaskets

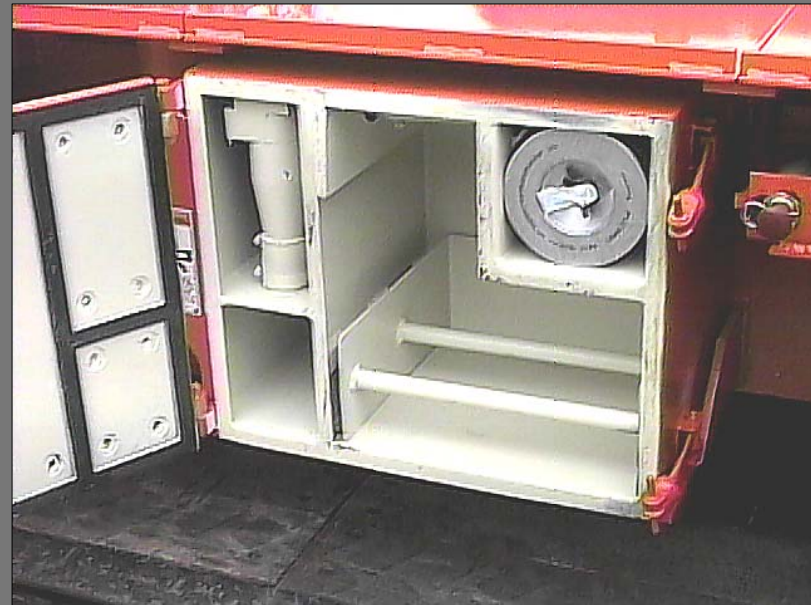
- > Doors not warped or bent
- > All gaskets installed, in good condition and clean



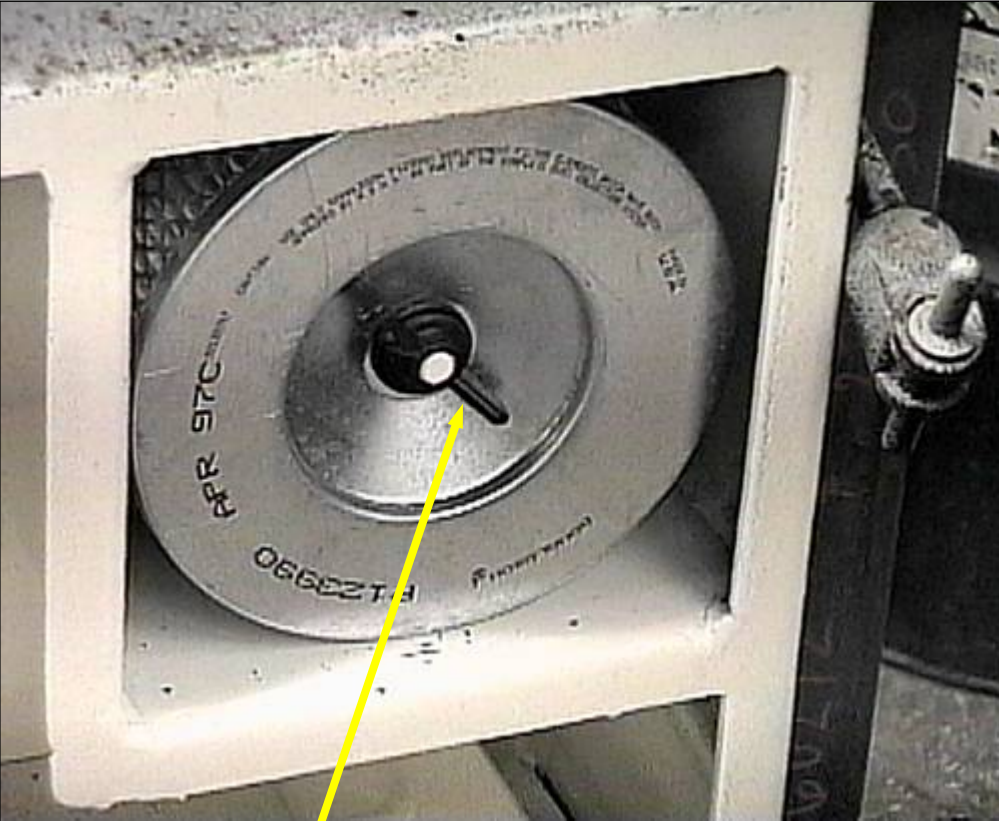


Cyclone Separator Units

- > Properly installed with clamps in place and tightened
- > Check for leaks



Filter Elements



Hand tighten wing nut – do not over torque



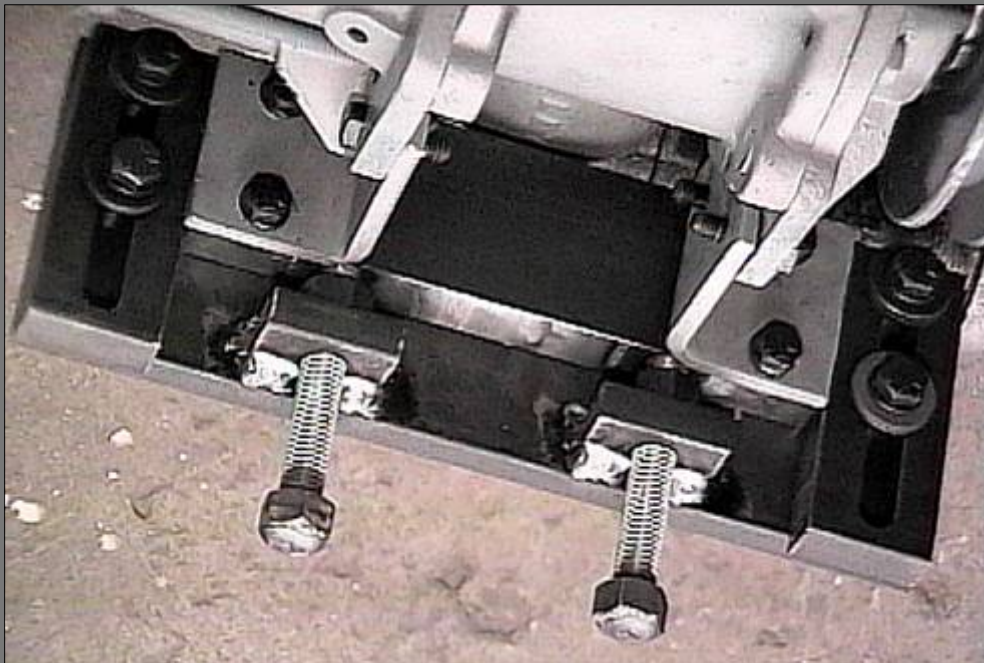
Never attempt to clean filter elements.

Remove and properly dispose of dirty element.

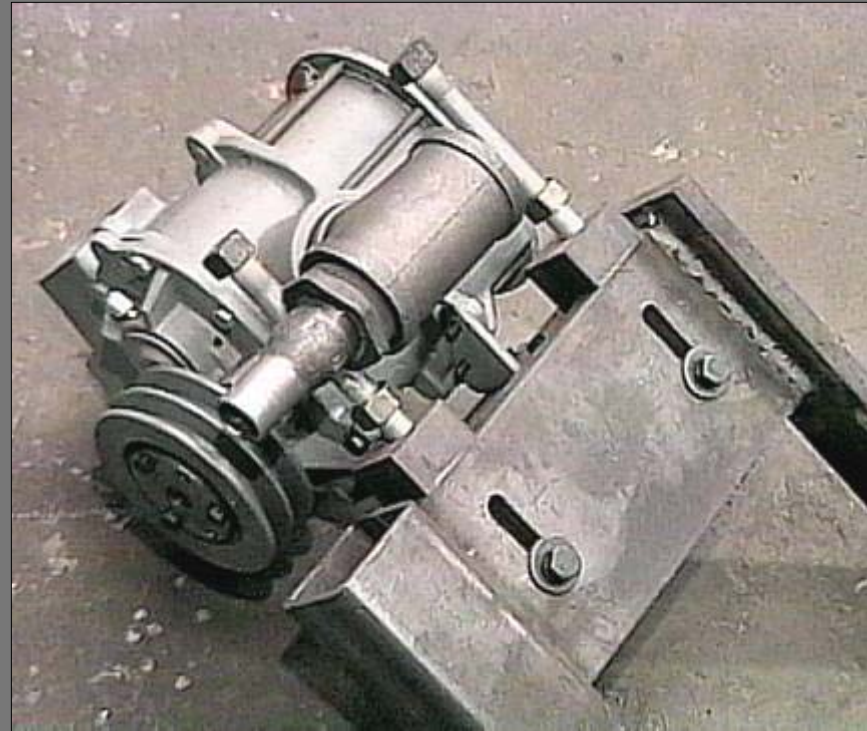
Install new approved element when dust collection efficiency decreases to the point that drilling rate is reduced.

INSPECTION AND MAINTENANCE - BLOWER BELT TENSION...

The belt tension is checked by applying moderate pressure midway between the sheaves - the belt deflection should be between 1/4" and 1/2".



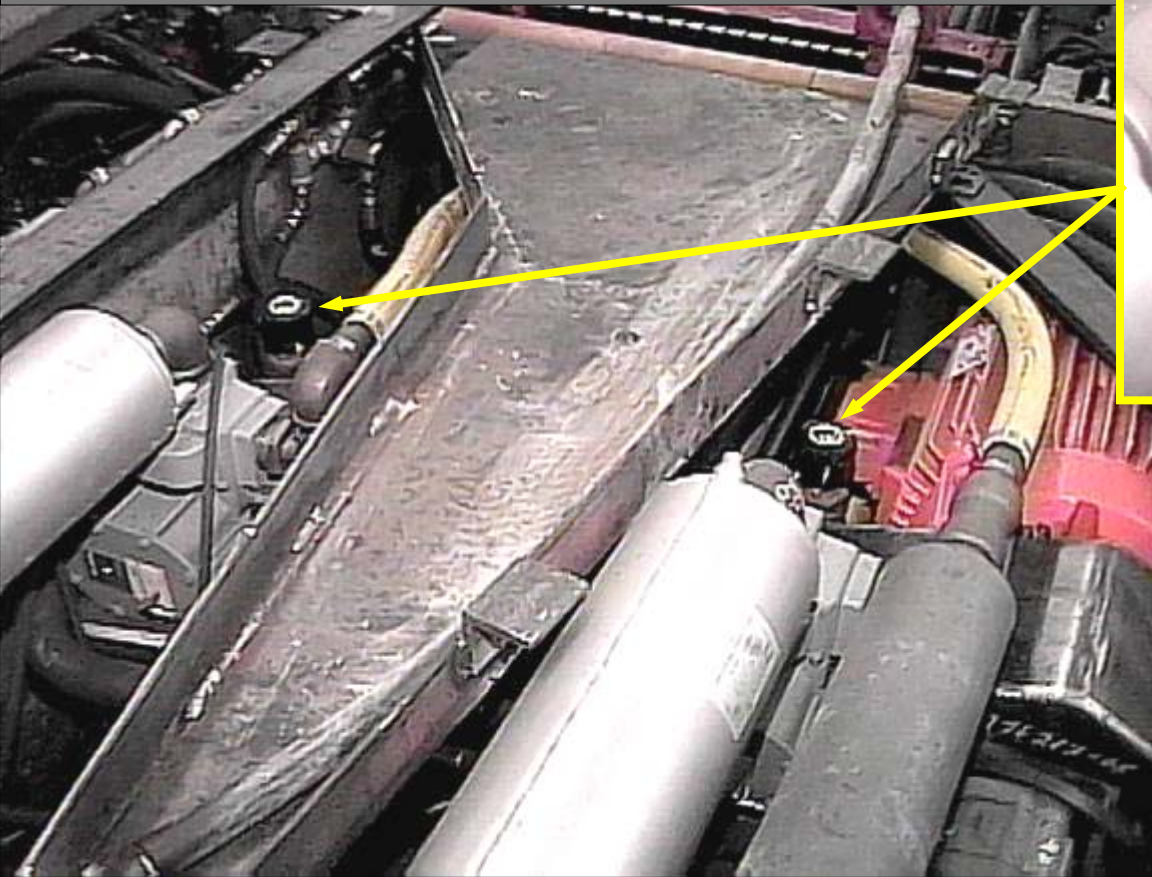
Horizontal Blower Mount



Vertical Blower Mount

INSPECTION AND MAINTENANCE - VACUUM RELIEF VALVE...

Blower vacuum relief valve must be set to maintain the minimum vacuum level specified on the Dust System Approval Plate. However, do not set vacuum relief valve excessively high.



NOTE:

LOOSEN SET SCREW BEFORE
ATTEMPTING TO ADJUST RELIEF
VALVE

Check vacuum blower relief valve by installing vacuum gauge over drill head chuck.



Part No.: 132121

INSPECTION AND MAINTENANCE - MUFFLERS...



INSPECTION AND MAINTENANCE - COOLING AIR INTAKE AIR FILTER...



Replace Every 6 Months

DUST BAGS

Adaptable with most dust systems







TABLE
OF
CONTENTS:

[MISCELLANEOUS](#)

[ELECTRICAL](#)

[PUMP SYSTEM](#)

[TRAM SYSTEM](#)

[DRILLING UNIT](#)

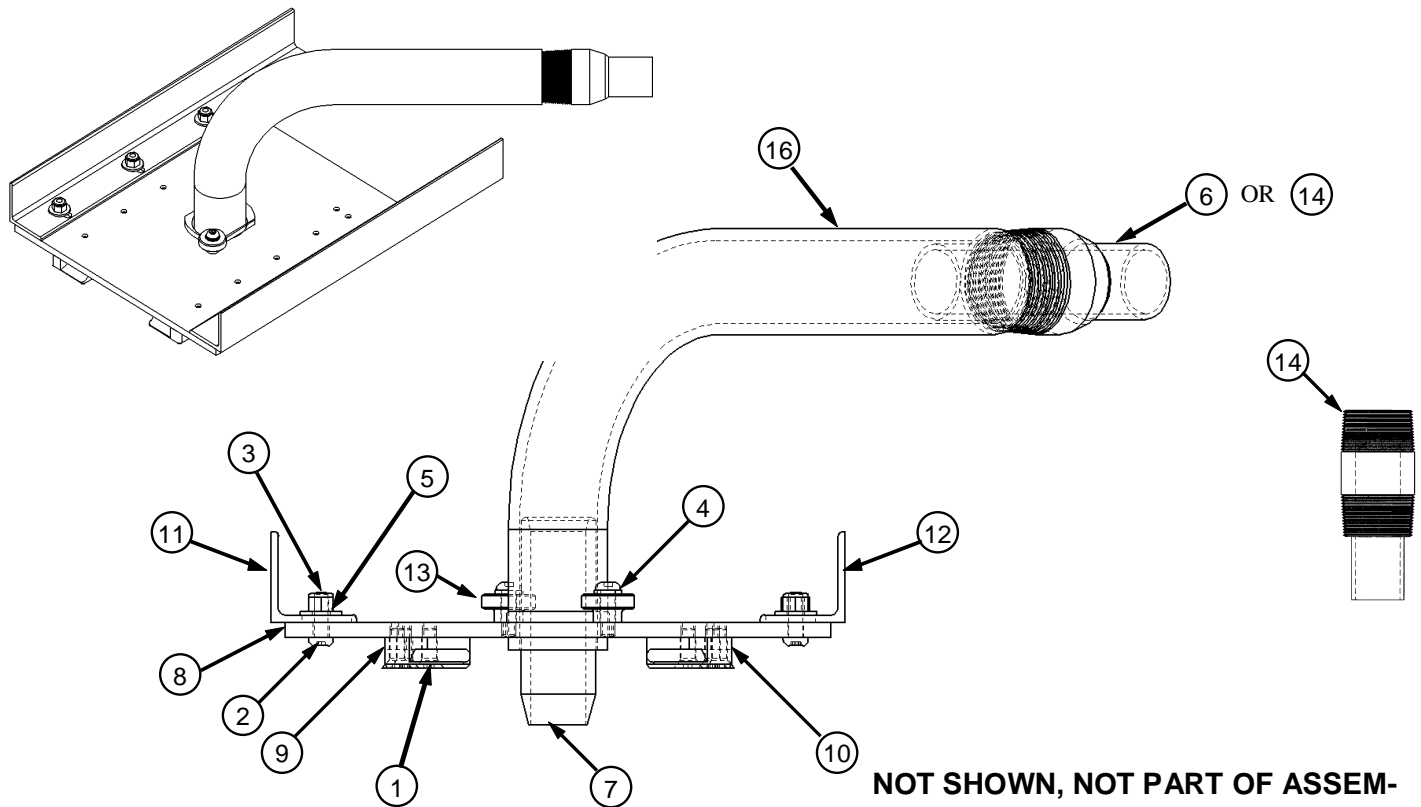
[DUST COLLECTION](#)

[SAFETY COMPONENT](#)

[VALVES](#)

[WATER \(OPTIONAL\)](#)

[ORDER FORM](#)



NOT SHOWN, NOT PART OF ASSEMBLY: 57302 DUST BAG

ITEM	DESCRIPTION	PART #	QTY	ITEM	DESCRIPTION	PART #	QTY
1	¼"-20x½" FLAT SOCKET HEAD CAP SCREW	20038	12	9	L.H. BAG GUIDE	364183	1
2	¼"-20x¾" BUTTON HEAD CAP SCREW	20094	8	10	R.H. BAG GUIDE	364184	1
3	¼"-20 HEX NUT	20757	6	11	L.H. ANGLE	364185	1
4	¼" LOCKWASHER	22021	2	12	R.H. ANGLE	364186	1
5	¼" FLAT-WASHER	22191	6	13	LOCK BUTTON	364187	2
6	DUST BAG FITTING ADAPTER	362757	1	14	DUST BAG ADAPTER NIPPLE	365311	1
7	DUST CONNECTOR	363576	1	15	HOSE CLAMP 1" TO 2" (NOT SHOWN)	53513	2
8	DUST BAG MOUNTING PLATE	364182	1	16	DUST HOSE	57320	1

SHEET NO.

SP-110

TITLE

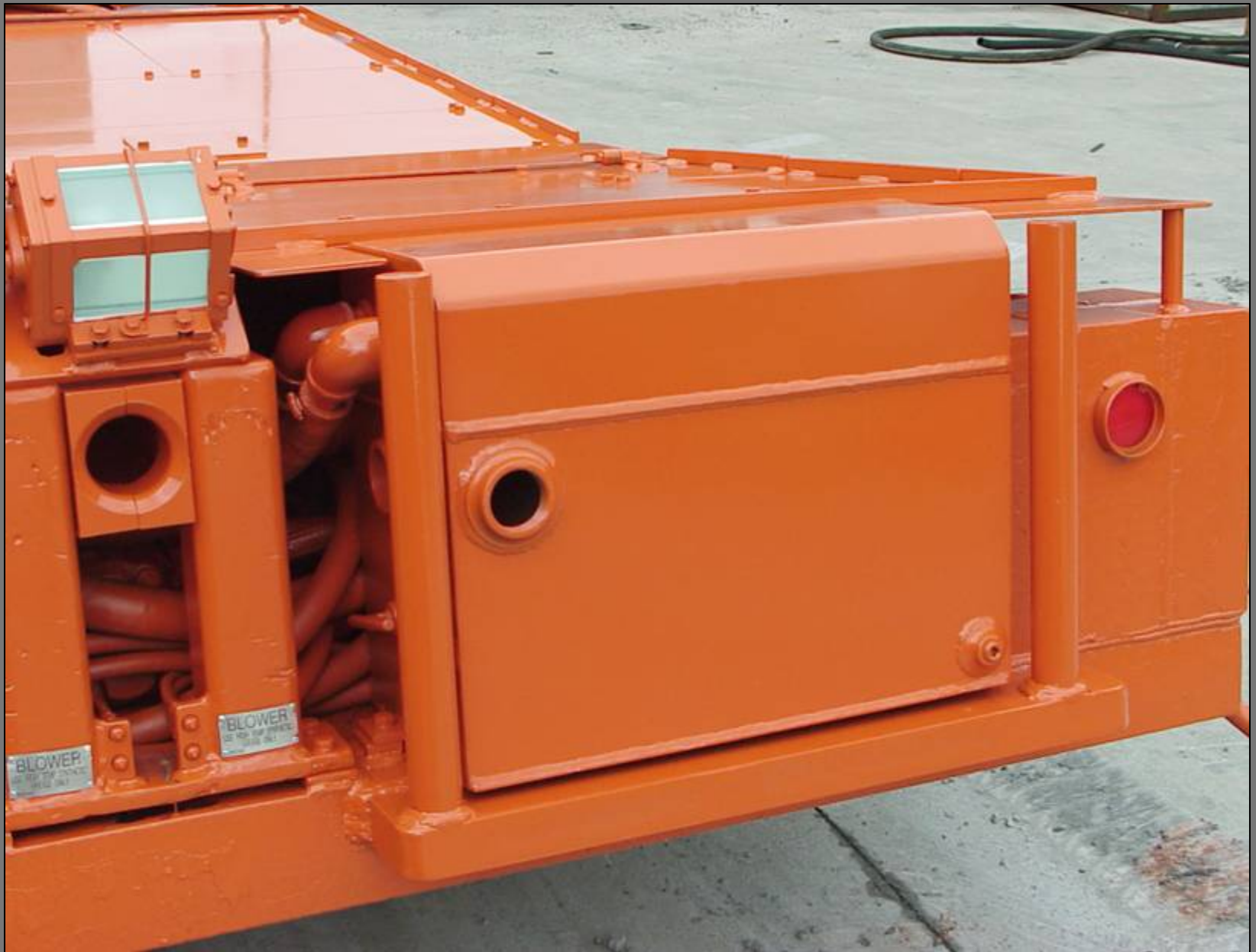
DUST BAG MOUNTING KIT

DATE

10-31-00

J. H. FLETCHER & CO.

402 HIGH STREET HUNTINGTON, WV



Water Box

“Our goal is to manufacture equipment for underground mining that increases safety and production through engineering innovation, quality control, experienced service and ownership stability”

*- J. Robert Fletcher
Chairman*



Phone: 304-525-7811

Fax: 304-525-3770

E-mail: jhf@jhffletcher.com

Website: www.jhffletcher.com